



Fmuser

FBE700 IPTV Gateway Server

HOTEL IPTV | HOSPITAL IPTV | Internet Service Provider(ISP) IPTV |
Cruise Ship IPTV | TRAINS IPTV | PRISONS IPTV | GOV AGENCIES |
SCHOOLS IPTV | FITNESS IPTV | ENTERPRISES IPTV

Product Overview



Introduction

The FBE700 IPTV Gateway is a flexibly modularized 1U device that combines the functionalities of an Encoder/Receiver, IP Gateway, and IPTV Server for protocol conversion and IPTV system applications. It accommodates up to three pluggable streamer cards, such as an encoder and tuner card, to receive HDMI and tuner signals, while converting input IP streams from embedded modules and Ethernet ports over various protocols (SRT, HTTP, UDP, RTP, RTSP, HLS) into output IP streams across the same protocols and RTMP. Integrated with FMUSER IPTV management software and streamer cards, the FBE700 is ideal for IPTV systems in settings like hotels, hospitals, and communities.

Main Features

- **All-in-One:** Combines Encoder/Receiver, IP Gateway, and IPTV Server.
- **Dual Web GUI:** One for Cards and Gateway, the other for the IPTV Server.
- **4 Gigabit Ethernet ports:** ETH0 provides output for SRT, HTTP, UDP (SPTS), RTP, RTSP, HLS, and RTMP; ETH1 and ETH2 are designated for input over SRT, HTTP, UDP (SPTS), RTP (SPTS), RTSP, and HLS; while ETH3 serves as the Web Management Port.
- **TS File Upload:** Upload TS files directly via the Web GUI for broadcasting.
- **Inter-Cut Feature:** Allows integration of a live program, TS file, and images.
- **IP Anti-Jitter:** Enhances stability of external IP streams.
- **Performance Metrics:** Maximum program numbers and terminal counts depend on bitrate and protocol type; up to 80% CPU utilization recommended.
- **Security:** Multi-level password control for system security.
- **Network Settings:** LCD and key button for easy network settings check.
- **Modular Design:** Maximum of 3 cards can be embedded for flexibility.

Main Features

Input	IP inputs through Ethernet 1 & 2, GE ports over SRT, HTTP, UDP (SPTS), RTP (SPTS), RTSP (over UDP, payload: MPEG TS), and HS.
	TS files are uploading through the web management interface.
	Encoder card, tuner card, etc. (Please refer to the detailed card specifications below.)
IP output	IP outputs through Ethernet 0, GE port over SRT, HTTP (unicast), UDP (SPTS multicast), RTP, RTSP, HLS, and RTMP (program source should be H.264 and AAC encoding).
System	Channel switching time with FMUSER STB: HTTP (1–3 seconds), HLS (0.4–0.7 seconds).
	It is closely related to the program bitrate and protocol type, etc., for the maximum program numbers involved in protocol conversion. The actual application shall prevail with a maximum of 80% CPU utilization. (Please refer to the test data for reference at the end of the specification.)
	It is closely related to the program bitrate and protocol type, etc., for the maximum affordable terminal numbers in the IPTV application of the STB/Android TV installed with the FMUSER IPTV APK. The actual application shall prevail with a maximum of 80% CPU utilization. (Please refer to the test data for reference at the end of the specification.)
	IPTV Features: Live channel, VOD, hotel intro, dining, hotel service, scenery intro, apps, adding scrolling captions, welcome words, pictures, advertisements, videos, music, etc. (These features are only applicable to the IP output application in the STB/Android TV installed with the FMUSER IPTV APK.)
Dimension	482mmx464mmx44mm(WxLxH)
Temperature	0~45°C(operation),-20~80°C(storage)
Power Supply	AC100V+10%,50/60Hz Or AC 220V+10%,50/60Hz

One-Stop IPTV Solution

Features

Innovative features that redefine hospitality.

- Cost-Effective
- Internet-Free Operation
- Fully Customizable
- Hotel Services Integration
- Efficient Guest Management
- Interactive Features
- Multilingual Support
- Complete Turnkey Solution
- Scalable Services
- Extensive Channel Selection
- Maintenance and Updates
- Seamless Integration
- High Compatibility
- Easy Transition to Cable TV
- Industry-Specific Interface

- Notice -

1. Functions may change due to system upgrades. Please check the latest FMUSER products.
2. Custom functions may incur additional fees.

Functions

Streamlined functions for enhanced guest satisfaction.

- Welcome Screen
- High-Quality Live TV
- Video on Demand (VOD)
- Food and Drinks Ordering
- Scenic Spots Information
- Hotel Information
- TV Widgets
- Purchase Requests
- Guest Messaging
- PMS Integration
- Show Guest Name
- Room Bill
- Express Checkout
- Shopping Cart
- Guest Survey
- Housekeeping Menu
- Flight Information
- News Feeds
- Fire Alarm Warning
- Timed Delivery of Purchases
- Table Booking Requests

Services

Comprehensive services for exceptional guest care..

- Compatible TV Sets
- Turnkey Custom Services
- Hardware and Software
- On-Site Installation Services
- System Pre-Configuration
- Training & Documentation
- 24/7 Online Support

- Service Fee Structure -

All service fees will be charged based on the actual project, including:

1. Accommodation (and food)
2. Round-trip travel expenses,
3. Engineering fees (per person per day)
4. Other costs incurred by the project.

For details, please consult FMUSER's technical support team

*...let us tailor your TV system
to enhance your guest experience...*

Main Functions

How FMUSER FBE700 Enhance Guest In-Room Entertainment

The FMUSER FBE700 IPTV Gateway Server enhances guest in-room entertainment with a custom welcome page and an interactive IPTV menu featuring SD, HD, and 4K live TV channels. Guests enjoy a paperless food menu for convenient ordering, integrated room services for easy requests, and a bespoke Video on Demand library. These features create a personalized and memorable experience for every guest.

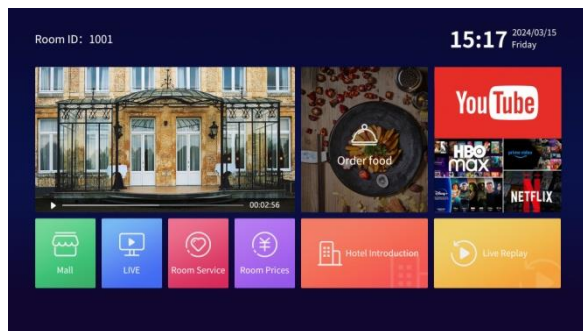
Custom Welcome Page



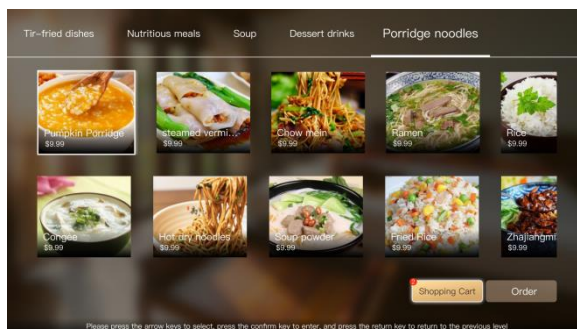
SD/HD/4K Live TV



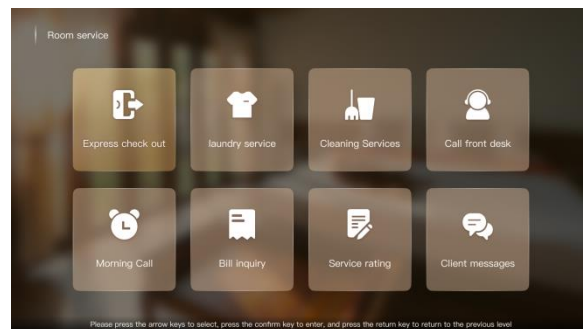
Interactive IPTV Menu



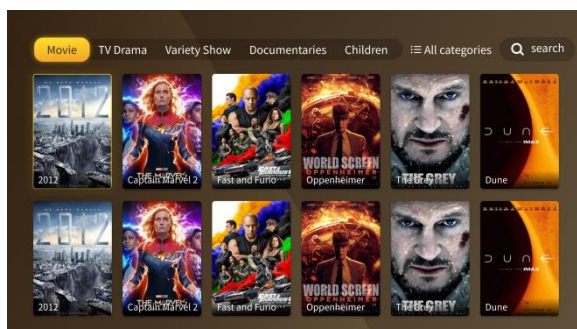
Paperless Food Menu



Integrated Room Services



Bespoke VOD Library



A Next-Gen IPTV Server

With the **FMUSER FBE700 IPTV Gateway Server**, you're not just investing in technology; you're investing in a solution that adapt to your unique needs.



01 - FMUSER FBE700 - 8H8F



04 - FMUSER FBE700 - 16H8F



02 - FMUSER FBE700 - 8H16F



05 - FMUSER FBE700 - 24H0F



03 - FMUSER FBE700 - 16H0F



06 - FMUSER FBE700 - 0H16F

Versatile broadcasting that reaches every audience...

✓ CAM/CI Encrypted TV

✓ HDMI/SDI TV Content

✓ DVB-S/S2Free-to-air

✓ IPTV Network Content

✓ UHF DVB-T2 TV

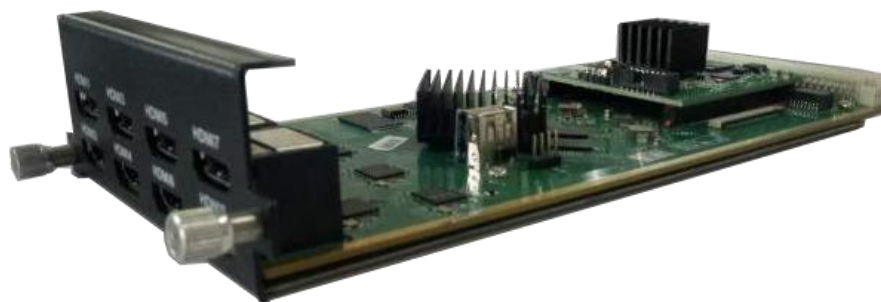
✓ RF DVB-T/ISDB/ATSC



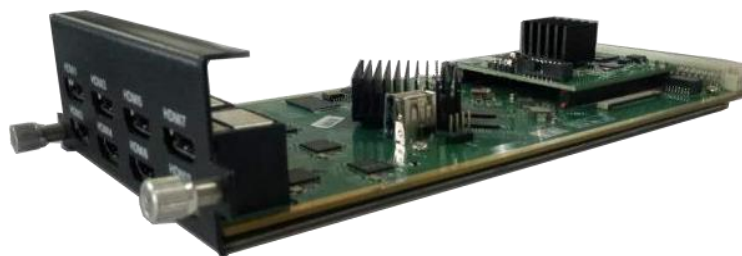
Specification	Details
Model	FMUSER-902A 2 Tuner Descrambling Card
Tuner Input	2 Tuner input, F Type
Stream Output	16 SPTS output over UDP/RTP
DVB-CI	2 independent common interface slots
Standards Supported	DVB-S, DVB-S2, DVB-S2X
DVB-S Specifications	
Input Frequency	950-2150MHz
Symbol Rate	QPSK 1~45Msps
Signal Strength	-65~ -25dBm
FEC Demodulation	1/2, 2/3, 3/4, 5/6, 7/8
DVB-S2 Specifications	
Input Frequency	950-2150MHz
Symbol Rate	QPSK/8PSK 1~45Msps; 16APSK 1~45Msps; 32APSK 1~32Msps
FEC Demodulation	1/2, 2/3, 3/4, 5/6, 7/8, 4/5, 5/6, 8/9, 9/10
DVB-S2X Specifications	
Input Frequency	950-2150MHz
Symbol Rate	QPSK/8PSK/16APSK: 0.5~45 Msps; 8APSK/32APSK: 0.5~40Msps
FEC Demodulation	QPSK: 1/2, 3/5, 2/3, 3/4, 4/5, 5/6, 8/9, 9/10, 13/45, 9/20, 11/20 8PSK: 3/5, 2/3, 3/4, 5/6, 8/9, 9/10, 23/36, 25/36, 13/18 8APSK: 5/9-L, 26/45-L 16APSK: 2/3, 3/4, 4/5, 5/6, 8/9, 9/10, 1/2-L, 8/15-L, 5/9-L, 26/45, 3/5, 3/5-L, 28/45, 23/36, 2/3-L, 25/36, 13/18, 7/9, 77/90 32APSK: 3/4, 4/5, 5/6, 8/9, 2/3-L, 32/45, 11/15, 7/9
Diseqc Function	Supported
Multiplexing	
Maximum PID Remapping	256 output PIDs
Functions	PID remapping (automatically or manually), Accurate PCR adjusting, generate PSI/SI table automatically
Descrambling	
CAM/CI Quantity	2
BISS Mode	Mode 1, Mode E; 32 BISS Keys



Specification	Details
Model	FMUSER-942A 4 Frequencies Descrambling Card
Stream Input	4 frequencies input (each RF in interface for 2 frequencies locking), F Type
Stream Output	16 SPTS output over UDP/RTP
DVB-CI	2 independent common interface slots
Standards Supported	DVB-C (J.83 A/C), J.83B, DVB-T, DVB-T2, ISDB-T switchable
DVB-C (J.83 A/C) Specifications	
Input Frequency	60MHz ~ 890MHz
Symbol Rate	1000 ~ 9000 Ksps
Constellation	16/32/64/128/256 QAM; 64/256 QAM for J.83B
DVB-T/T2 Specifications	
Input Frequency	60MHz ~ 890MHz
Bandwidth	5/6/7/8M bandwidth; PLP supported for DVB-T2
ISDB-T Specifications	
Input Frequency	60-890MHz
Multiplexing	
Maximum PID Remapping	256 output PIDs
Functions	PID remapping (automatically or manually), generate PSI/SI table automatically
Descrambling	
CAM/CI Quantity	2
BISS Mode	Mode 1, Mode E; 32 BISS Keys



Specification	Details
Model	FMUSER-228S 8 HDMI Encoder Card
Input	8 x HDMI (4 HDMI available)
Output	8 x SPTS (4 SPTS if 4 HDMI) output over UDP/RTP/RTSP, Unicast/Multicast
Video Encoding	
Video Format	MPEG-4 AVC/H.264
Input Resolution	1920×1080_60P, 1920×1080_60i, 1920×1080_50P, 1920×1080_50i, 1280×720_60P, 1280×720_50P, 720×576_50i, 720×480_60i
Output Resolution	1920×1080_30P, 1920×1080_25P, 1280×720_30P, 1280×720_25P, 720×576_25P, 720×480_30P
GOP Structure	IP...P (P Frame adjustment, without B Frame)
Video Bit-Rate	1 Mbps ~ 13 Mbps each channel
Rate Control	CBR/VBR
Audio Encoding	
Audio Format	MPEG1 Layer II, LC-AAC, HE-AAC, and AC3 Pass through, support audio gain adjustment
Sampling Rate	48 KHz
Audio Bit-Rate	MPEG-1 Layer 2: 48/56/64/80/96/112/128/160/192/224/256/320/384 kbps LC-AAC: 48/56/64/80/96/112/128/160/192/224/256/320/384 kbps HE-AAC: 48/56/64/80/96/112/128 kbps
Additional Features	Support for Logo, Caption, QR Code insertion



Specification	Details
Model	FMUSER-228S-V2 8 HDMI Encoder Card
Input	8 x HDMI (4 HDMI available)
Output	8 x SPTS (4 SPTS if 4 HDMI) output over UDP/RTP/RTSP, Unicast/Multicast
Video Encoding	
Video Format	HEVC/H.265, MPEG-4 AVC/H.264
Input Resolution	1920×1080_60P, 1920×1080_60i, 1920×1080_50P, 1920×1080_50i, 1280×720_60P, 1280×720_50P, 720×576_50i, 720×480_60i
Output Resolution	1920×1080_30P, 1920×1080_25P, 1280×720_30P, 1280×720_25P, 720×576_25P, 720×480_30P
GOP Structure	IP...P (P Frame adjustment, without B Frame)
Video Bit-Rate	1 Mbps ~ 13 Mbps each channel
Rate Control	CBR/VBR
Audio Encoding	
Audio Format	MPEG1 Layer II, LC-AAC, HE-AAC, and AC3 Pass through, support audio gain adjustment
Sampling Rate	48 KHz
Audio Bit-Rate	MPEG-1 Layer 2: 48/56/64/80/96/112/128/160/192/224/256/320/384 kbps LC-AAC: 48/56/64/80/96/112/128/160/192/224/256/320/384 kbps HE-AAC: 48/56/64/80/96/112/128 kbps
Additional Features	Support for Logo, Caption, QR Code insertion

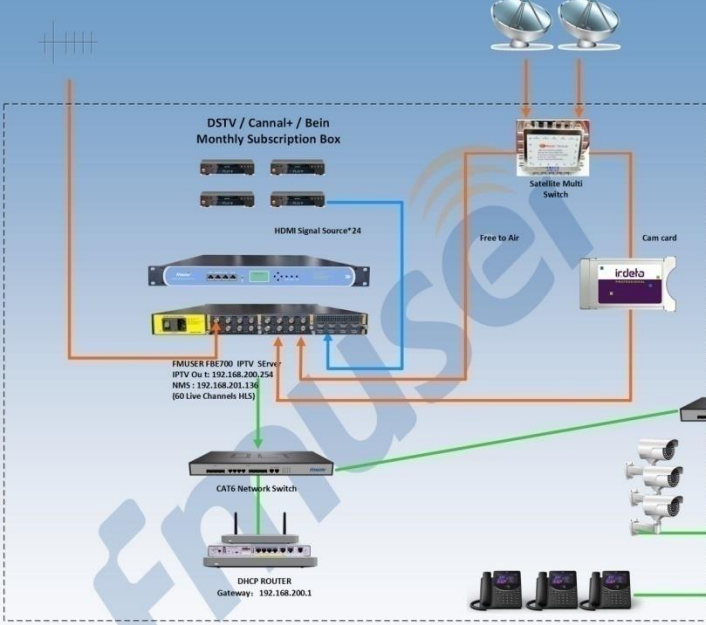


Specification	Details
Model	FMUSER-908 8 FTA DVB-S/S2/S2X Tuner Card
Stream Input	8 Tuner input, F Type
Stream Output	512 SPTS out over UDP/RTP/RTSP, Unicast/Multicast
Tuner Input Standard	DVB-S/S2/S2X
Symbol Rate	QPSK/8PSK/16APSK: 0.5 ~ 45 Msps; 8APSK/32APSK: 0.5 ~ 40 Msps
Input Frequency	950-2150 MHz
DVB-S Specifications	
Constellation	QPSK
FEC Demodulation	1/2, 2/3, 3/4, 5/6, 7/8
DVB-S2 Specifications	
Constellation	QPSK/8PSK/16APSK/32APSK
FEC Demodulation	QPSK: 1/2, 2/3, 3/4, 5/6, 3/5, 4/5, 8/9, 9/10 8PSK: 3/5, 2/3, 3/4, 5/6, 8/9, 9/10 16APSK: 2/3, 3/4, 4/5, 5/6, 8/9, 9/10 32APSK: 3/4, 4/5, 5/6, 8/9, 9/10
DVB-S2X Specifications	
Constellation	QPSK/8PSK/8APSK/16APSK/32APSK
FEC Demodulation	QPSK: 1/2, 3/5, 2/3, 3/4, 4/5, 5/6, 8/9, 9/10, 13/45, 9/20, 11/20 8PSK: 3/5, 2/3, 3/4, 5/6, 8/9, 9/10, 23/36, 25/36, 13/18 8APSK: 5/9-L, 26/45-L 16APSK: 2/3, 3/4, 4/5, 5/6, 8/9, 9/10, 1/2-L, 8/15-L, 5/9-L, 26/45, 3/5, 3/5-L, 28/45, 23/36, 2/3-L, 25/36, 13/18, 7/9, 77/90 32APSK: 3/4, 4/5, 5/6, 8/9, 2/3-L, 32/45, 11/15, 7/9, 9/10
Diseqc Function	Supported
Multiplexing	
Maximum PID Remapping	256 output PIDs
Functions	PID remapping (automatically or manually), Accurate PCR adjusting, generate PSI/SI table automatically
Descrambling	
BISS Mode	Mode 1, Mode E; up to 120 Mbps, 32 BISS Keys



Specification	Details
Model	FMUSER-928 8 FTA DVB-C/T/T2/ISDB-T Multi-Mode Tuner Card
Stream Input	8 tuner input, F Type
Stream Output	512 SPTS out over UDP/RTP/RTSP, Unicast/Multicast
Tuner Input Standards	DVB-C (J.83 A/C)/J.83B, DVB-T, DVB-T2, ISDB-T switchable
DVB-C (J.83 A/C) Specifications	
Input Frequency	60MHz ~ 890MHz
Symbol Rate	1000 ~ 9000 Ksps
Constellation	16/32/64/128/256 QAM; 64/256 QAM for J.83B
DVB-T/T2 Specifications	
Input Frequency	60MHz ~ 890MHz
Bandwidth	5/6/7/8M bandwidth; PLP Index: 0~255 for DVB-T2
ISDB-T Specifications	
Input Frequency	60-890MHz
Multiplexing	
Maximum PID Remapping	256 output PIDs
Functions	PID remapping (automatically or manually), generate PSI/SI table automatically
Descrambling	
BISS Mode	Mode 1, Mode E; up to 120 Mbps, 32 BISS Keys

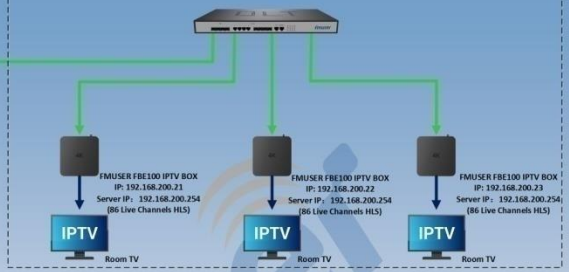
FMUSER FBE700 IPTV Solution(All in one)



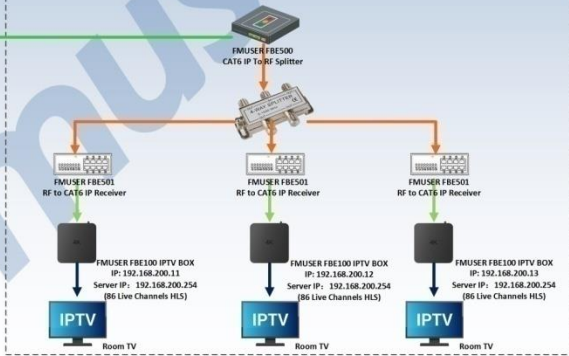
FMUSER IPTV System Over Coaxial Solution				
Title	FMUSER IPTV System Over Coaxial Solution			
Design	tom	Check	Zoey	Drawn: Bossco
Date	2024-9-3			



How the IPTV Rooms work

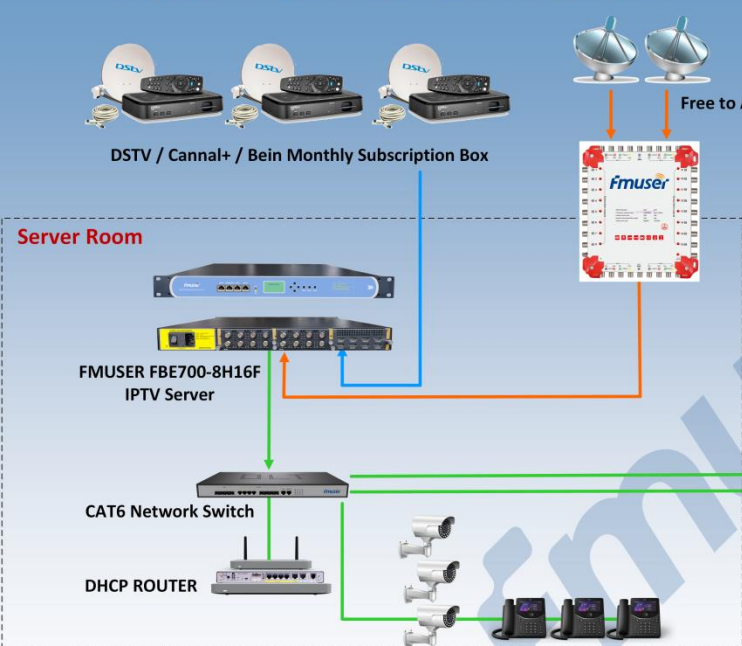


How the IPTV Over Coaxial work



Architecture

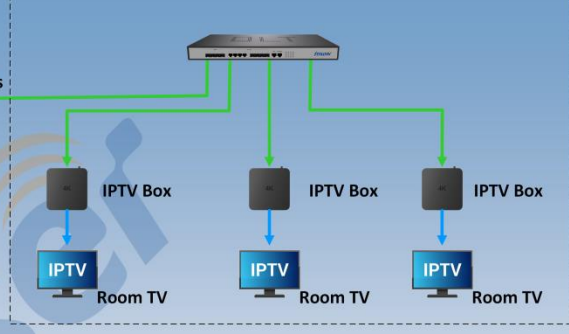
FMUSER FBE700 HOTEL IPTV Solution



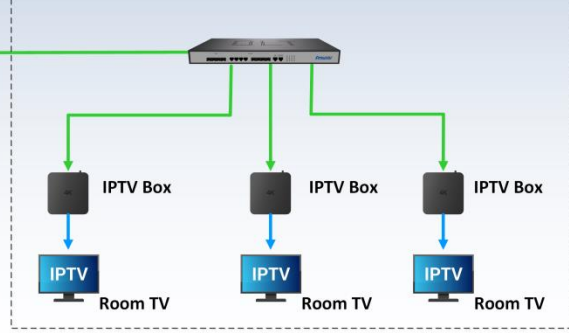
Become a FMUSER business partner

- Don't know how to install an IPTV system?
 - › FMUSER provides online technical support
 - › FMUSER provides technical training and certification exams
- Don't know how to expand the business of system integrators?
 - › FMUSER provides multi-category business expansion training
 - › FMUSER provides a business model for rapidly expanding a large number of hotels

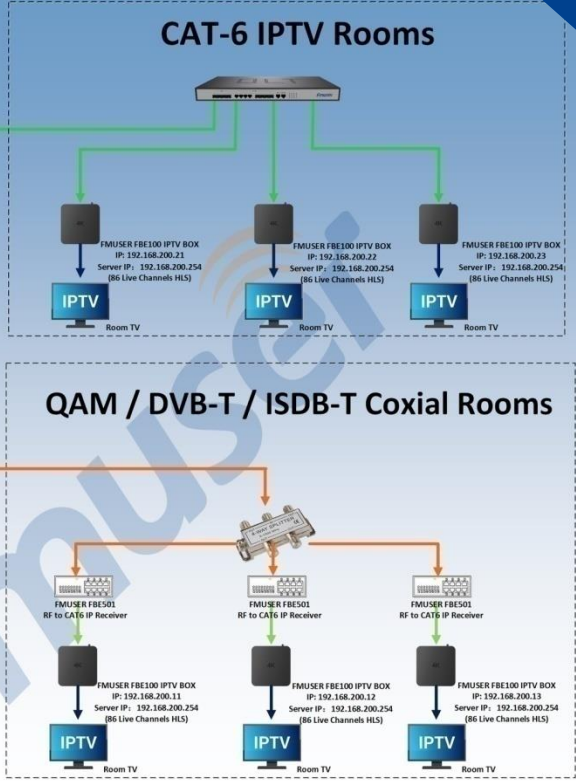
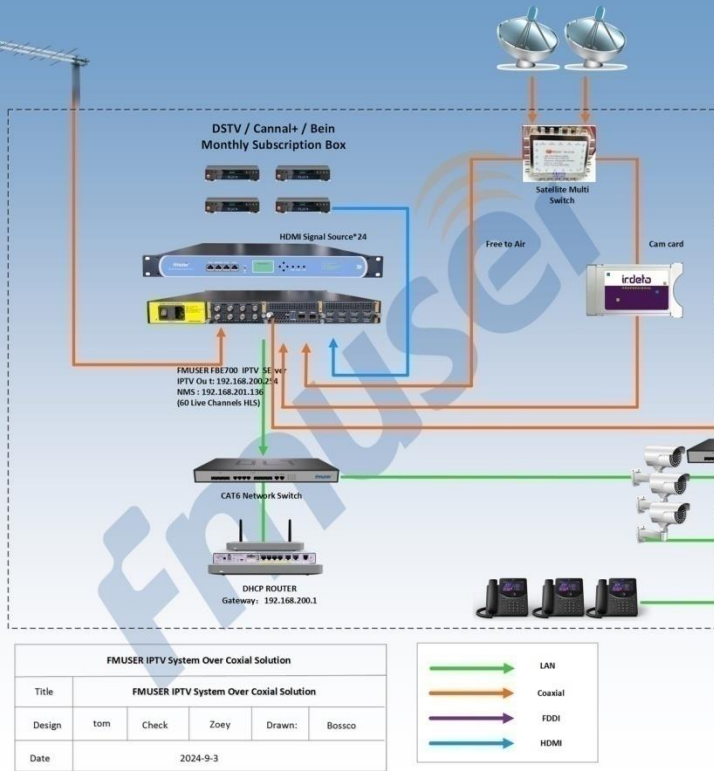
Floor 1 Hotel Rooms



Floor 2 Hotel Rooms

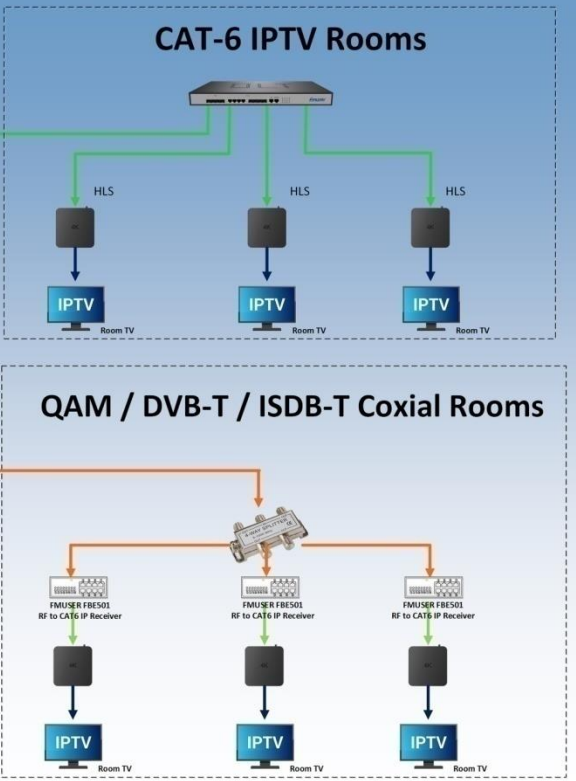
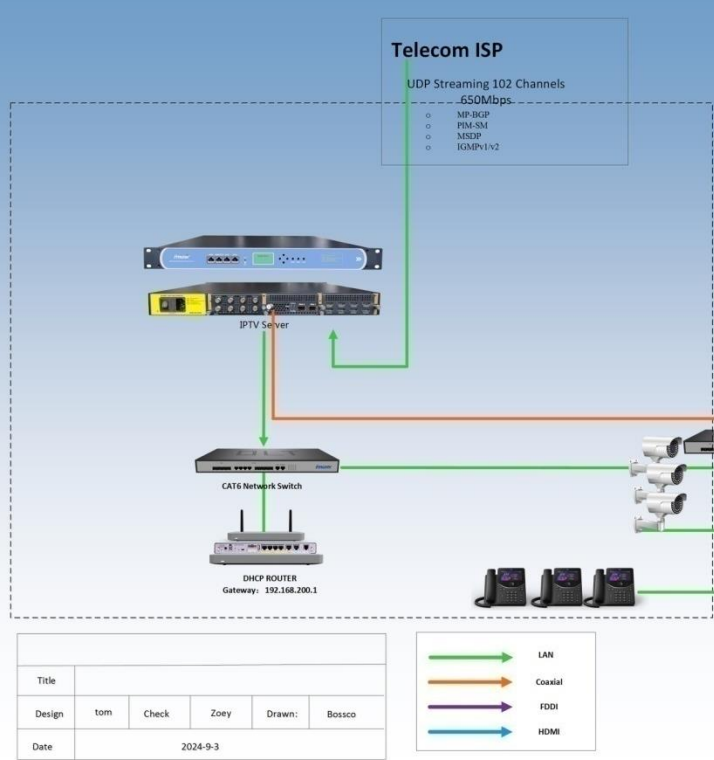


FMUSER FBE700-C IPTV & Coaxial Solution



Architecture

IPTV Solution



Main Applications

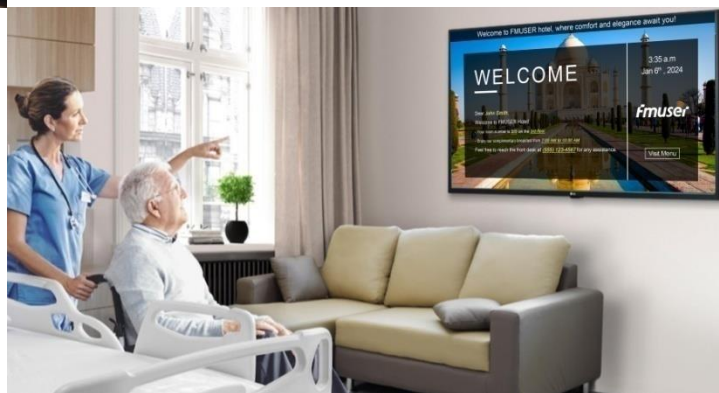


Hotel & Resort Entertainment

The FMUSER FBE700 IPTV gateway server transforms the entertainment experience in hotels and resorts by offering a seamless and user-friendly interface for guests. With a wide range of channels and on-demand content, guests can enjoy personalized entertainment directly from their rooms, enhancing their overall stay.

Hospital Patient Care

In hospitals, the FMUSER FBE700 IPTV gateway server provides critical entertainment and information services to patients. It allows hospitals to deliver educational content about health and wellness while also offering movies and shows that can aid in patient recovery and comfort during their stay.



Hospitality Venue Services

The FMUSER FBE700 enables hospitality venues, such as restaurants and cafes, to create engaging dining experiences. By offering IPTV services, venues can showcase live events, news, and promotional content that attracts customers and enhances their visit, making dining more enjoyable.



Prison Inmate Engagement

The FMUSER FBE700 IPTV gateway server enhances inmate engagement in correctional facilities by providing access to a controlled selection of educational and entertainment content. This contributes to a more rehabilitative environment, helping inmates to spend their time constructively.



Main Applications

Cruise Ships & Vessels

For cruise liners and passenger vessels, the FMUSER FBE700 delivers an exceptional onboard entertainment experience. Passengers can access a variety of channels and on-demand content, making their journey more enjoyable and adding value to their travel experience.



Fitness Studios

The FMUSER FBE700 IPTV gateway server offers fitness studios the capability to stream fitness classes and wellness programs directly to members. This not only enhances in-studio experiences but also allows for virtual classes, increasing member engagement and satisfaction.

Train & Transportation

The FMUSER FBE700 enhances the travel experience for train passengers by providing high-quality entertainment options during their journey. With access to movies, series, and real-time information, passengers can enjoy a more comfortable and enjoyable ride.



Education Learning

In educational institutions, the FMUSER FBE700 IPTV gateway server supports interactive learning by delivering educational content and resources directly to classrooms and common areas. This technology promotes engagement and enriches the learning environment for students.

Main Applications

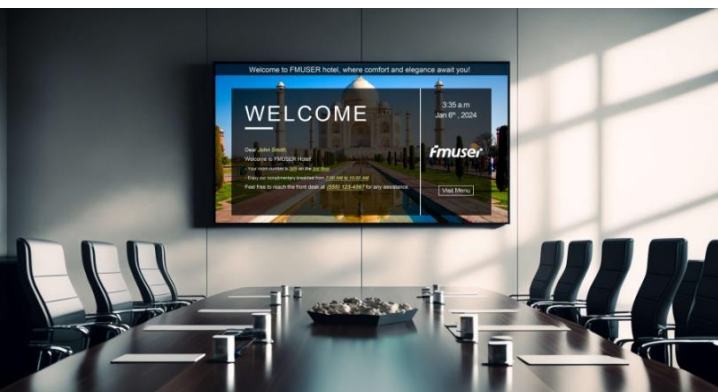


ISP Community Access

The FMUSER FBE700 enhances community living by providing ISPs with the ability to deliver tailored IPTV services to residential blocks. Residents gain access to a diverse range of channels and content, fostering a sense of community and satisfaction.

Government Offices

The FMUSER FBE700 IPTV gateway server improves communication and engagement in government offices by providing access to training materials, informational broadcasts, and entertainment. This tool enhances the work environment and promotes staff well-being.



Enterprise Communication

The FMUSER FBE700 IPTV gateway enhances enterprise communication by offering an effective platform for internal broadcasting of training, updates, and corporate messaging. This fosters better engagement among employees and supports a cohesive company culture.

Name Your Industries

FMUSER provides tailored IPTV solutions for industries like hospitality, healthcare, and education. Our scalable systems offer comprehensive content and user-friendly interfaces, enhancing engagement and satisfaction. With expert support, we ensure your IPTV solution meets evolving industry demands. Elevate your business with FMUSER!



We Goes Beyond IPTV



**Design & Consulting
Solution**



**Engineering
Outsourcing Services**



**Internet-free
IPTV Solutions**



**Hospitality
TV Sets Solution**



**FM, AM, and TV Station
Equipment**



**Turnkey Radio Studio
Solutions**



**Smart Door Lock
Solutions**



**Digital TV Headend
Solution**



**Control Room Furniture
Solution**



**PA & Audio
Visual Solution**



**AI-based
Smart Hotel Solution**



**Integrated
Audio & Video System**

Explore FMUSER DVB Digital TV Headend Equipment



IP Modulator

16-32QAM / DVB-T / ISDB-T / ATSC Modulator
 8/16/32/48/64 QAM (DVB-C) Carriers Modulator
 8/16 DVB-T / 8/16 ISDB-T Carriers Modulator
 32/64 Analog TV RF out Modulator



4 / 8 / 12 / 16 / 24 HDMI in Encoder
 ASI IP out



8/12/16/24 HDMI/DVB-S/S2x In Encoder
 Modulator QAM (DVB-C) DVB-T ISDB-T OUT



8 / 16 / 24 DVB-S2 / DVB-T2 / ATSC Tuner In
 FTA Free Receiver Gateway ASI IP out



4 / 8 / 12 / 16 / 24 SDI in Encoder ASI IP out



2 / 4 / 8 DVB-S2 Satellite Tuner In CAM
 IRD Receiver with CI Slot



8/16/32 DVB-S/S2 / DVB-S2x / Transmodulator
 QAM (DVB-C) Carriers out Modulator



Steaming IPTV System for Hotel
 Hospital, Dormitories, Druise SHIP IPTV Gateway

Contact Info



- Web: www.fmradiobroadcast.com
- Email: sales@fmuser.com
- Phone: [\(+86\) 139-2270-2227](tel:+8613922702227)

Quality is the priority

Of what we do in our
business through the
proccess.

Follow us

